

# Vacuum Shot Blasted Floor Marking

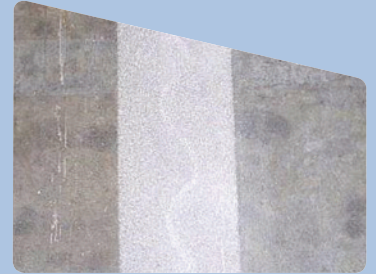
A durable and versatile method of floor marking makes Shot Blasting the preferred choice of prepared line marking by most, thanks to the speed of preparation and potential performance.

Specified for facilities with busy FLT movements, shot blasting can be installed on most floors, making it suitable for old and new warehouses or distribution centres which need cost effective floor marking, but where long-lasting durability is not essential.

Shot Blasting is the method of hitting the concrete floor with 'shot', a small piece of metal which strips the surface to leave virgin concrete. The 'Shot' is able to remove to various depths depending on the machine used and severity of the impact. Typically a depth of 1mm to 3mm is achieved providing a surface for the paint to key with.

Two part epoxy resin is the preferred paint system used with this method of prepared line marking, however in some cases we may need to use other types to ensure the best possible finish and durability. The finish is not as crisp or durable as Diamond Shaved, however this is reflected in the cost, which makes Shot Blasting a more viable alternative for some organisations.

This method is a great compromise on price, durability and aesthetics. Simple and quick to install, a good level of durability, a cost effective solution and a full range of colours available.

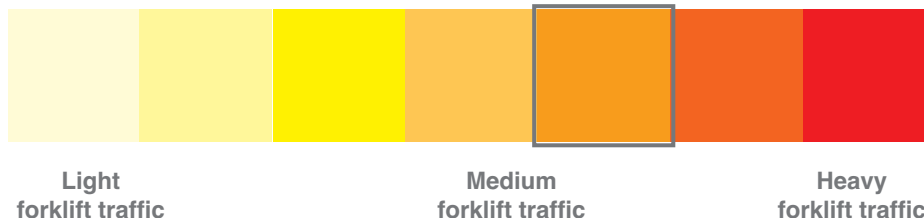


Shot Blast Preparation

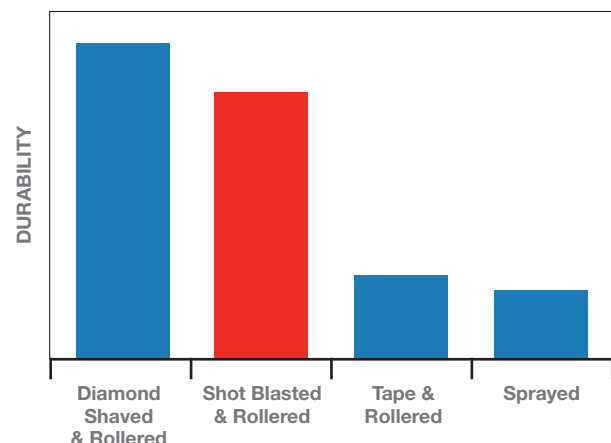


Shot Blasted Finished

## Specified for use with:



## Durability Compared to Other Methods



**“Our vision is to be the supplier of choice for warehouse and industrial identification, safety systems and associated products, offering clients a quality-driven, total solution via multi-channel procurement methods.”**

**Tony Gresty**  
Managing Director – Warehouse Partners



# Labelling and Safety Solutions to reduce time and costs

## Products available:

- Location labels, aisle markers and identification products
- RackNets™ safety netting and other safety netting products
- Warehouse safety products including safety signs right through to floor and line marking solutions
- Label holders to provide a range of ID solutions for shelving
- Load notice signs (SEMA signs)
- Machine guarding
- Mesh partitioning and security fencing



**Call Us**  
**01925 715761**