

# Diamond Shaved Floor Marking

Line marking is a powerfully visual product which customers expect to be precise, straight and durable. To achieve a durable product the concrete must be prepared and it is here where precision and strength is achieved.

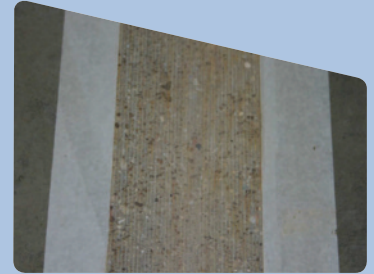
Diamond shaved line marking is a specialised method develop by Warehouse Partners for the warehouse and distribution industry. The nature of busy warehouse environments dictates the need for a durable product and quite simply, diamond shaved is the most durable, the most accurate and most professional available in the UK.

Diamond shaving is the process of 'shaving' an area of the concrete floor surface to reveal virgin concrete and a rough surface which helps the paint system key more firmly. This removes any seal or 'Power Float' coating and is done with the use of a specialised diamond blade shod machine to a depth of 1mm – 4mm.

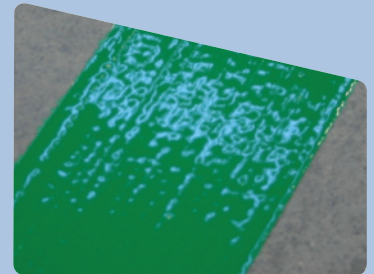
The line edge created during this method provides a very accurate and clean finish on prepared concrete, something not possible with other methods. This means the line edge does not fail as with other types, and significantly increases it ability to withstand constant use with forklift trucks and MHE.

We use various types of paint to create durable line marking, with Diamond Shaved preparation we always recommend a two part epoxy which is a high build system, this further enhances its durability.

This method is available in 100mm wide lines as standard, 50mm and 250mm are available alternatives though we do not recommended them for line marking because of time and accuracy deficiencies.



Diamond Shaved Preparation



Diamond Shaved Finished

### Specified by Warehouse Partners for use with:



Light  
forklift traffic

Medium  
forklift traffic

Heavy  
forklift traffic

Linear Metres	Weekday Price per lin/m	Weekend Price per lin/m
500	£10.66	£14.34
1250	£5.74	£9.72
2500	£5.51	£8.27
5000	£5.34	£8.05
7500	£5.23	£7.91
10000	£4.91	£7.54

These are guide prices only, site surveys and consultations are recommended for accurate quotations.

### Durability Compared to Other Methods

